

Subtract two 4-digit numbers – one exchange

1

Th	H	T	O
1,000 1,000	100 100	10 10	1 1
1,000 1,000	100 100	10	1 1
1,000			1

a) Use the place value chart to complete the calculation.

$$5,435 - 3,215 = \boxed{}$$

b) Use the place value chart to complete the calculation.

$$5,435 - 3,216 = \boxed{}$$

c) Which calculation was easier? Talk about it with a partner.

d) What happens when you don't have enough counters in a column to take away?

2

Complete the sentences.

1 ten can be exchanged for ones.

1 hundred can be exchanged for 10 _____.

1 thousand can be exchanged for _____.



3

Complete the calculations.

a)

	H	T	O
	3	2	7
-	1	1	9
<hr/>			
<hr/>			

c)

	Th	H	T	O
	9	8	4	5
-	6	2	1	6
<hr/>				
<hr/>				

b)

	Th	H	T	O
	7	6	7	3
-		1	3	4
<hr/>				
<hr/>				

4

Complete the calculations.

a)

	H	T	O
	3	2	7
-	1	3	2
<hr/>			
<hr/>			

c)

	Th	H	T	O
	9	8	4	5
-	2	3	6	0
<hr/>				
<hr/>				

b)

	Th	H	T	O
	7	6	7	3
-		2	8	1
<hr/>				
<hr/>				





5 Complete the calculations.

a)

		Th	H	T	O
		3	2	7	0
	-	1	3	2	0
<hr/>					
<hr/>					

c)

		Th	H	T	O
		9	8	4	5
	-	1	9	2	1
<hr/>					
<hr/>					

b)

		Th	H	T	O
		7	6	7	3
	-		7	2	1
<hr/>					
<hr/>					

6 Annie is calculating $3,467 - 2,148$

Here are her workings.

		Th	H	T	O
		3	4	6	7
	-	2	1	4	8
<hr/>					
		1	3	2	1
<hr/>					

Do you agree with Annie? _____

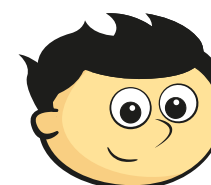
Explain your answer.

7 A car costs £8,716

A motorbike costs £2,341 less than the car.

How much does the motorbike cost?

8 Jack is thinking of two 4-digit numbers.



The greater number is 6,410
The difference between the two numbers is 3,107

What is the sum of the two numbers?

